



## Boost Productivity and Collaboration with Microsoft Solutions

Work is changing. It's becoming more fluid and more collaborative. It's transcending the boundaries that limited where and when it could happen. These changes are igniting new possibilities for how work gets done and what we can accomplish together, and workers everywhere are adjusting to meeting, chatting, and collaborating exclusively online. Microsoft and SYNNEX can help make sure your customers stay connected and collaborate more seamlessly.

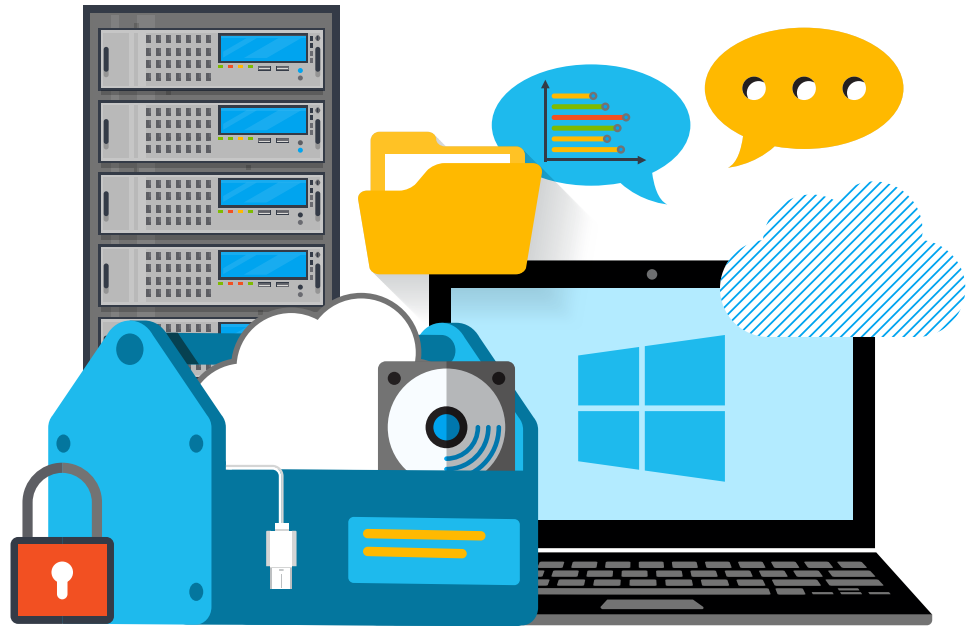
Start working seamlessly with such Microsoft Solutions as:

- Windows Pro 10
- Microsoft Office 365
- Windows Autopilot

## Help your team work more effectively, collaboratively, and creatively with modern devices running Windows 10 Pro.

Modern devices are essential tools in today's workplace. These devices are designed for mobility, have a long battery life, and deliver high performance anywhere and anytime. Modern devices deliver built-in protection to help keep identity, data, and devices secure.

Windows 10 is the most secure Windows ever. Windows 10 Pro includes built-in protections for your data, equipment, and people, securing business information and personal identities even on lost or stolen devices. Business essentials like firewall, secure boot, and file-level information-loss protection come standard on every device.



## Embrace online collaboration with Office 365.

Office 365 apps like Word, Excel, and PowerPoint feature real-time co-authoring. This means your customers can work on a file and so can their teammates. They'll see their changes and their teammates' —as they make them.

## Simplify deployment with Windows Autopilot.

Windows Autopilot is a modern desktop management deployment tool for Windows 10 enabled by Intune. No more image and drive maintenance. Your customers simply open their new laptop or tablet, sign into the device, and download the preconfigured image from the cloud. It's that easy!

**To learn more about Microsoft collaborative and remote solutions,  
email [microsoftoem@synnex.com](mailto:microsoftoem@synnex.com).**